

# GRAND CENTRAL'S FINEST RETAIL OPPORTUNITY



NEW STOREFRONTS RECENTLY INSTALLED

RXR

CUSHMAN &  
WAKEFIELD

230 | PARK

AT GRAND CENTRAL

230PARKAVENUE.COM

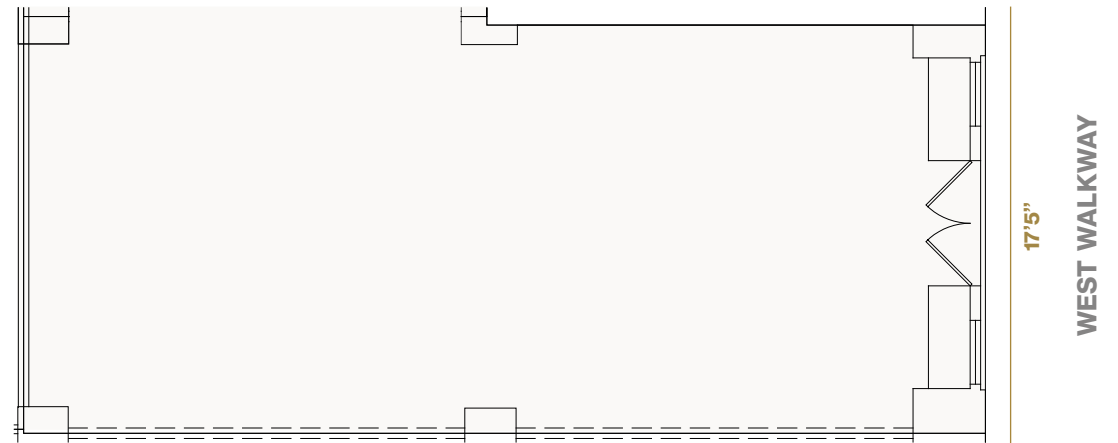
# GROUND FLOOR



# SPACE A - 910 SF

## Space Highlights

- **910 SF**
- **Non-vented uses only**
- **20' Ceilings**
- **Exterior signage opportunities**

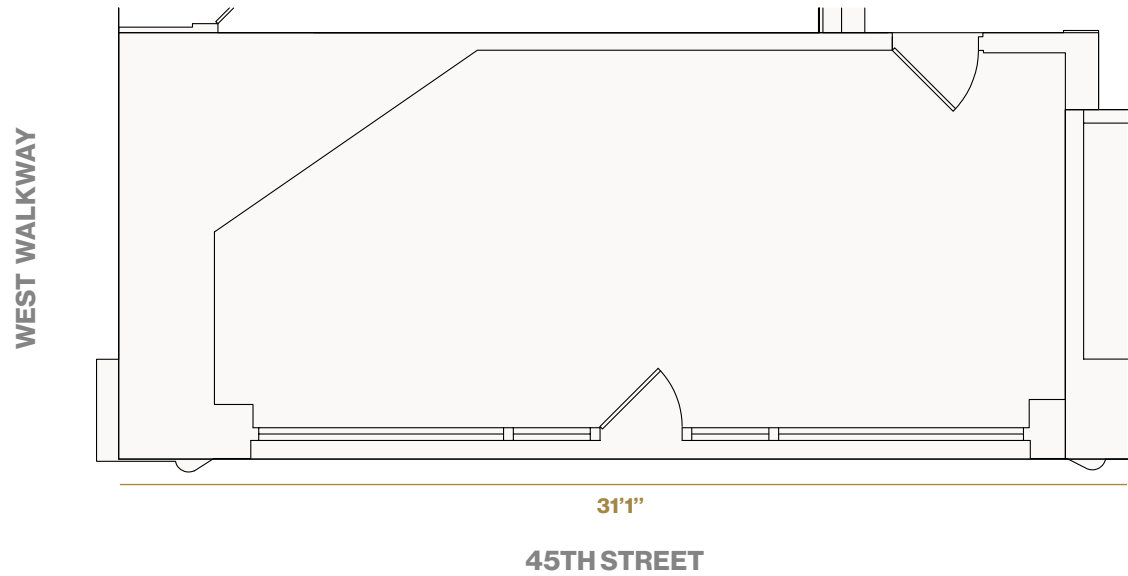


# SPACE B - 412 SF



## Space Highlights

- **412 SF**
- **400 Amps Electric**
- **Column Free Space**
- **10' Ceilings**
- **Exterior signage opportunities**

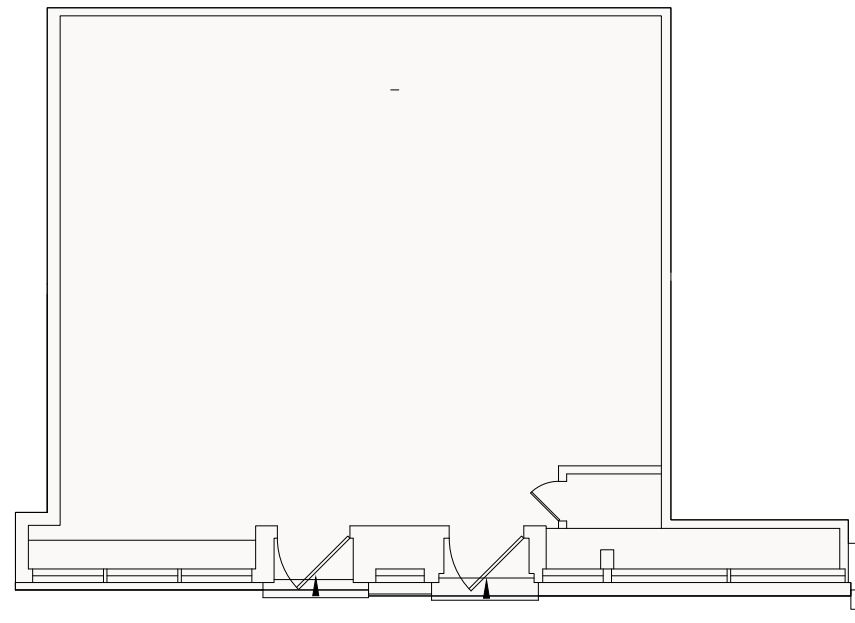


# SPACE C - 651 SF



## Space Highlights

- **651 SF**
- **Formerly Eddie's Shoe Repair**
- **Column Free Space**
- **HVAC in place**
- **Exterior signage opportunities**



24'9"

45TH STREET

# INCREDIBLE VISIBILITY FROM PARK AVENUE



RXR

CUSHMAN &  
WAKEFIELD

230 | PARK

AT GRAND CENTRAL

230PARKAVENUE.COM

# NEIGHBORHOOD

Steps away from one of the most iconic & recognizable transportation destinations.  
750,000 daily visitors

## Restaurants

- 1 Bobby Van's Steakhouse
- 2 Lexington Brass
- 3 Pavillion
- 4 Morton's
- 5 Avra

## Retail

- 6 Saks Fifth Avenue
- 7 Paul Stuart
- 8 H&M
- 9 NBA Store
- 10 Barnes & Noble
- 11 Urban Outfitters
- 12 Alden Shoes
- 13 Charles Tyrwhitt
- 14 Zara
- 15 & Other Stories
- 16 Adidas
- 17 Aritzia

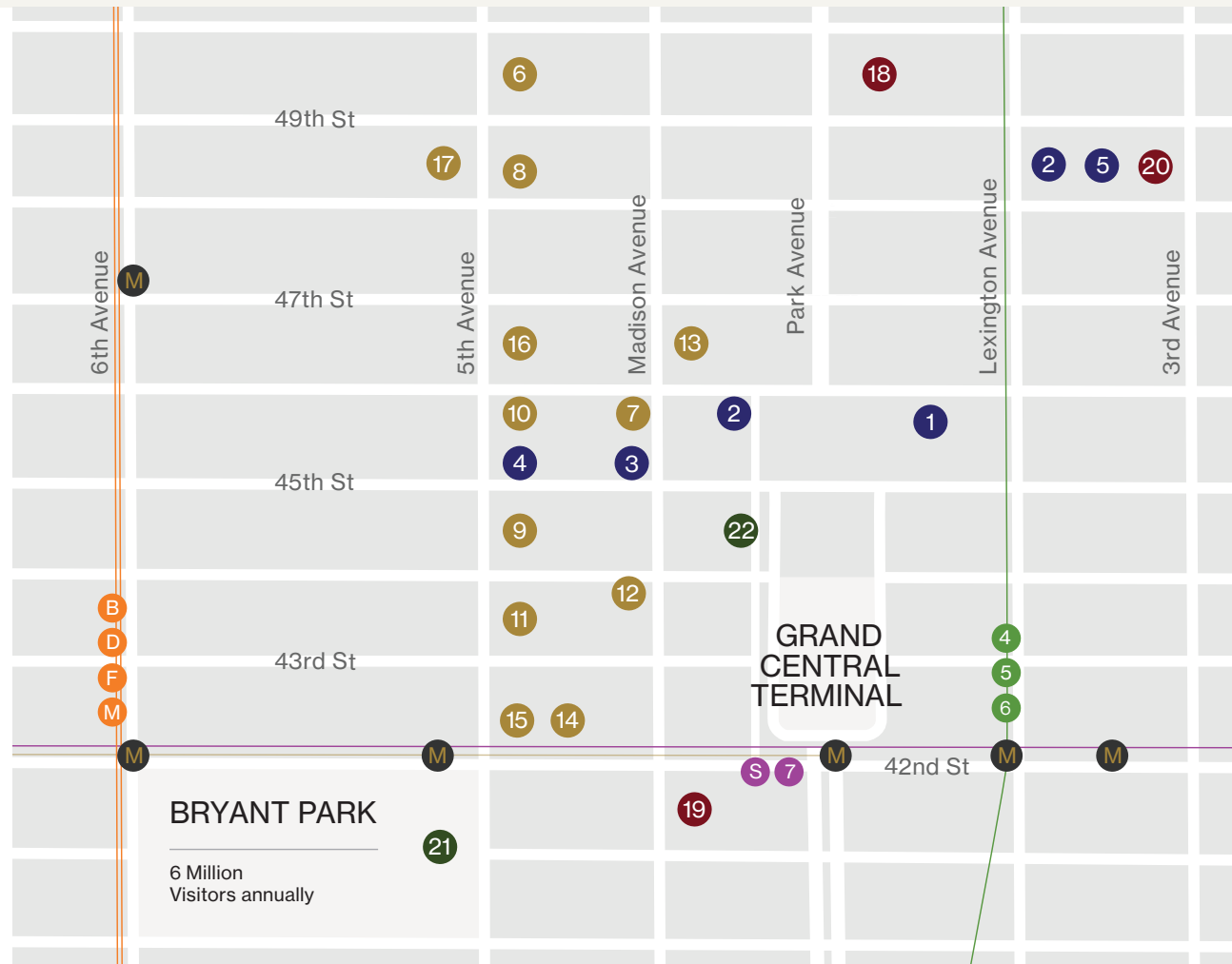
## Hotel

- 18 Waldorf Astoria
- 19 The Library Hotel
- 20 Intercontinental

## Points of Interest

- 21 New York Public Library
- 22 The Yale Club

**#2 NYC Tourist Destination** after Times Square  
6 Million Visitors annually



- **Access to Metro North**
- **31** commuter and **15** city bus routes
- **2 Million taxis** a year

- **7 Subway lines B,D,F,M,4,5,6,S,7**
- Buses to and from **3 Airports**

# LOCATION



## Captive Consumer Base

- **\$200 Million** in sales annually at Grand Central Terminal
- **21.6 Million** tourists annually
- **46 Million** annual subway riders
- One of the **highest aggregate** income producing neighborhoods in NYC



230 | PARK

AT GRAND CENTRAL

230PARKAVENUE.COM



# CONTACT



## **Michael O'Neill**

212 841 7909  
michael.oneill@cushwake.com

## **Jason Greenstone**

212 841 7713  
jason.greenstone@cushwake.com

## **Taylor Reynolds**

212 841 5920  
taylor.reynolds@cushwake.com

---

## **Andrew Ackerman**

212 444 3821  
aackerman@rxr.com

## **Walter Rooney**

212 715 6122  
wrooney@rxr.com

